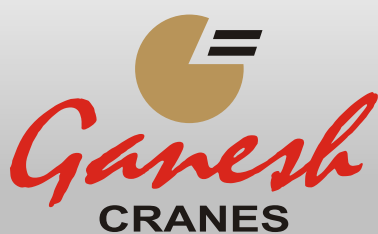




# Material Handling Equipments



[www.eotcrane.in](http://www.eotcrane.in)

## Our Introduction

Ganesh Cranes is a leading manufacturers and exporters of EOT & HOT cranes, Electric Wire Rope Hoist. jib cranes. Established in 1975, it is managed by competent professionals having rich and diverse experience in the field of crane manufacturing and electric wire rope hoist. Ganesh Cranes has state-of-the-art manufacturing faculties, based in Rajkot, to manufacture robust and high tech electric wire rope hoists and cranes.

Starting crane manufacturing as a small company, Shri Dhirubhai & Shri Pravinbhai had a vision of a big company and have developed the business to the national level. The management team of Ganesh Cranes comprises professionally trained members with more than 30 years of experience in the field of engineering.

### Manufacturing

The industrial cranes are designed and manufactured as per Indian Standard Specifications applicable to the Cranes.

IS : 807 - Code of practice for design, manufacture, erection and testing (Structural Portion) of Cranes and Hoists

IS : 3177 -Code of practice for design of Overhead Travelling Cranes and Gantry Cranes other than Steel Mill Cranes

IS : 4137 - Code of practice for Design of Steel Mill Cranes

### Accessories

- 1 Down Shop Leads(DSL)
- 2 Gantry Rail with clamps for EOT Cranes
- 3 Festoon System for power supply
- 4 We undertake complete erection & commissioning of EOT Cranes

At operations and control levels, we are computerized right from estimation to final design and drawings, thereby reducing the time period and increasing accuracy.

We have a team of good experts, specialized in fabrication, machining, sub assembly of mechanical components, final assembly and testing of cranes. We manufacture cranes with strict quality controls, follow good manufacturing practices(GMP) and workmanship. Our motto is to give good design and quality equipments to our customers to their complete satisfaction.

A Quality Assurance Plan (QAP) is prepared and is strictly implemented to ensure good quality of our cranes.

Third party inspection can also be appointed to have checks at all the intermediate stages of manufacturing and assembly.



## **About Us**

Our efficient work force, team of professionally qualified personnel and sound infrastructure is appropriate for the production of superior quality products. We have developed a sophisticated infrastructure located in Rajkot – Gujarat equipped with the modern and sophisticated tools and machines.

## **Our Mission**

Our prime mission is to provide superior quality Overhead Crane and Electric Wire Rope Hoist that are efficient, highly productive and durable. We always endeavor to meet the expectations of valuable customers by providing them excellent quality Products. All diligent efforts assist us to emerge as one of the prominent manufacturers.

Our research and development personnel work hard to design and development that meet the customers' requirements.

## **Our Aim**

- To increase the production
- To deliver the Products as per our commitment
- Minimize the product problems and provide better quality
- To bring new design, improvement & technology
- Strengthen the supply chain

## **Our Vision**

Company has set a vision to increase the production and deliver the products as per our commitment. We also aim to minimize the product problems and provide better quality to further strengthen the supply chain. Additionally, to bring new design, improvement & technology is also our prime motive.

## Single Girder EOT Crane



**Ganesh Crane manufactures Single Girder cranes has following distinguished features:**

- Ganesh Single Girder Cranes are modular in basic construction.
- It is designed to adopt standard wire rope hoist and trolleys
- Compact and light weight
- Modular design ensuring lower space requirement and lower head clearance
- Lower column and gantry girder loads.
- Suitable for Light and Medium duty workshop applications
- Heavy duty cast steel rope guide
- Upper and Lower hook travel limit switches – completely guided and easily securable
- Additional Counter weight operated over hoist limit switch as option
- Variable Frequency Drives are available as an option for different speed settings
- Wireless Radio Remote Control for all movements and all speed settings is available as an option.
- Compact and lightweight festoon cable system for cross travel
- Very reliable, stable and efficient DSL power feeding system is available for main power supply to crane.
- Pendant Push-button control is a standard supply
- Double geared LT wheels for quick change over
- Nitrided wheels for very long life and undistorted geometry of the wheels
- All wheels run on anti - friction bearings of most reputed make.
- Low hydrogen, high strength and high ductility welding rods used for welding



## Double Girder EOT Crane



Ganesh heavy duty double girder cranes are designed and manufactured to customer's specific needs and suitable to end applications. We make double girder EOT crane up to 50 tone and 40 m span.

### **Ganesh make Double Girder cranes have following distinguished features**

- Compact and light weight
- Maximum use of modular design concept ensuring lower space requirement and lower head clearance
- Lower column and gantry girder loads.
- Cranes suitable for specific requirement are designed and manufactured for light, medium and heavy duty class as per IS 3177-1999(Reaffirmed 2004) along with IS 807.
- Additional Counter weight operated over hoist limit switch as option
- Variable Frequency Drives are available as an option for different speed settings
- Wireless Radio Remote Control for all movements and all speed settings is available as an option.
- Compact and lightweight festoon cable system for cross travel
- Very reliable, stable and efficient DSL power feeding system is available for main power supply to crane.
- Pendant Push-button control is a standard supply
- Nitrided wheels for very long life and undistorted geometry of the wheels
- All wheels run on anti - friction bearings of most reputed make.
- Ample space on trolley for ease of maintenance
- Full length (along the crane span) platform on the Long travel drive side girder
- Under slung cranes and minimum height designs can be provided
- Crab hoist or foot mounted hoist are used depending on capacity and other operating parameters.
- Dual speeds and micro speeds can be provided

## ELECTRIC WIRE ROPE HOIST



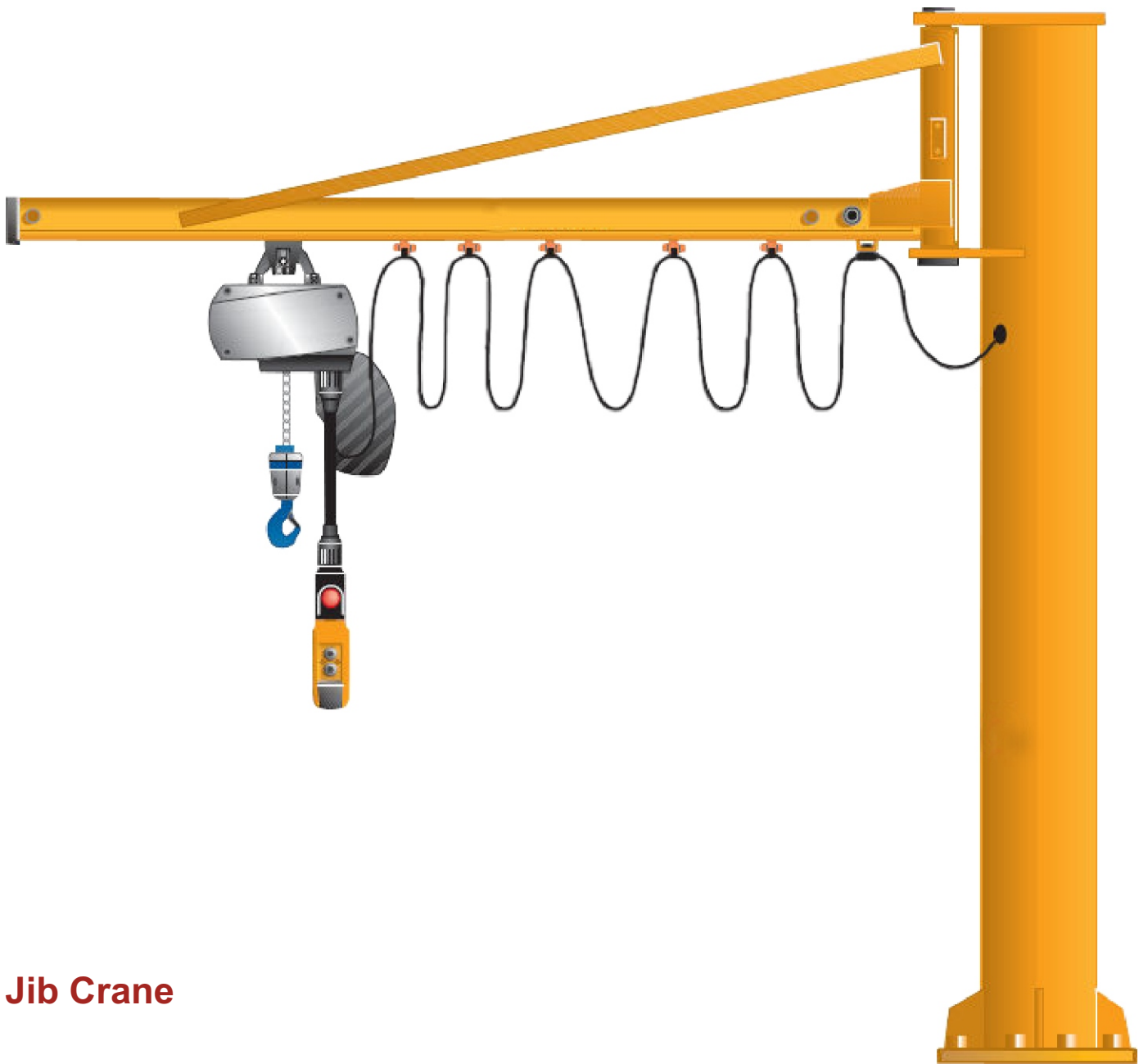
### **Quality**

All the equipments are manufactured under stringent Quality and safety norms. The company believes in quality at every step of production process.

### **R&D**

The company has an in-house R&D department. The R&D works at the cutting edge of technology to develop innovative. The R&D team consists of highly qualified research specialists. The company's continuous investment in R&D ensures it remains a market leader.

## Jib Crane



### Jib Crane

**Capacity**

250 kgs. to 5000 kgs.

**Rotation**

Up to 360 degree

**Boom Radius**

Up to 6 mtrs.



## JIB CRANES IN VARIOUS CONFIGURATIONS

Ganesh designs and manufactures jib cranes in various configurations.

### · **FREE STANDING JIB CRANES**

- Pillar Mounted – 180 movement, 360 rotation or any other angle as per the need.
- Work station jib cranes
- Pivot design jib cranes
- Articulated jib cranes

### **WALL MOUNTED / BRACKET MOUNTED**

- Pivot design
- Work station
- Travelling wall mounted jib cranes
- Column bracket Mounted
- Articulated

### **BASE MOUNTED**

This self-supported jib crane is designed for base plate mounting on concrete foundation, and has 360° rotation or less as per the requirements

### **FIXED WALL BRACKET**

This jib crane is designed for wall / RCC Column bracket mounting and has 180° maximum rotation in general. Covers the area near the bracket mounting without obstruction at floor level. Jib cranes with end of wall situation or a column mounted bracket can have rotation up to 180

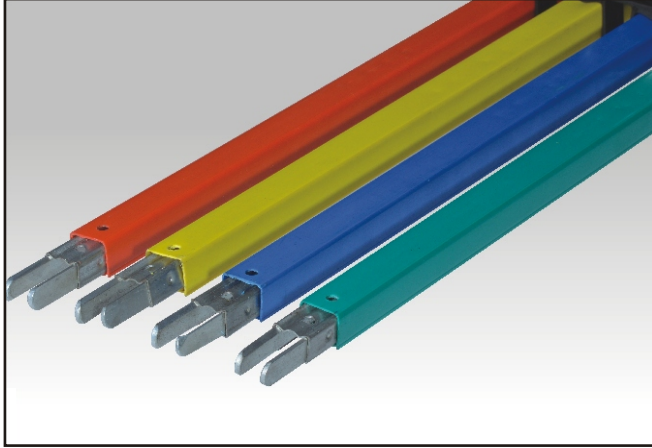
### **TRAVELLING WALL BRACKET**

Covers the lengthwise area near the building columns without obstruction at floor level. It requires special design for columns. These cranes do not rotate but travels on runway tracks suspended along building / shed columns.

**PENDANT PUSH BUTTON**



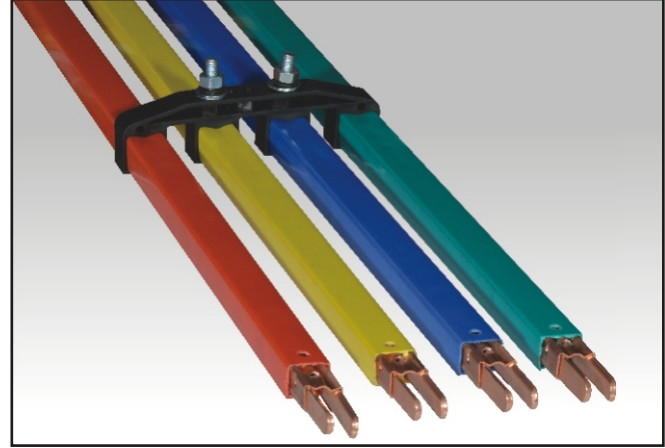
## SHROUDED COMPACT DSL BUSBAR SYSTEM



**GI Pin Type DSL Busbar**

### SAFE POWER "M" (Pin Type)

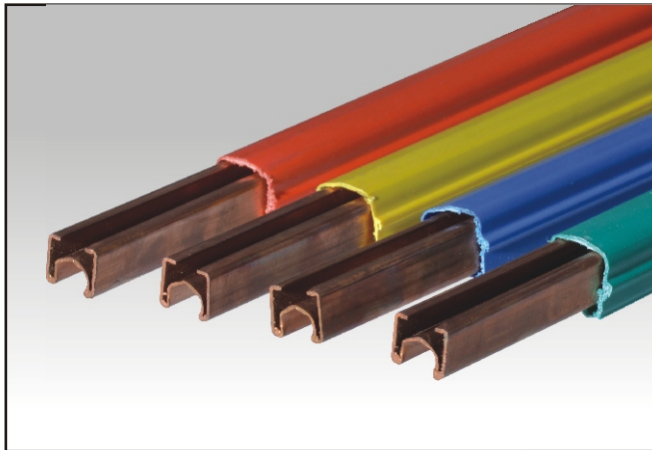
- Pin Joint for Proper Alignment.
- 60, 100, 125 Amps. Galvanised Iron.
- 1 Pole / 4 Pole Hangers.
- Pin Type Conductor Bar Length 4 Mtr.
- 1500 mm to 6000 mm Radius.
- System up to 150 Meter Without expansion joint



**Copper Pin Type DSL Busbar**

### FEATURES

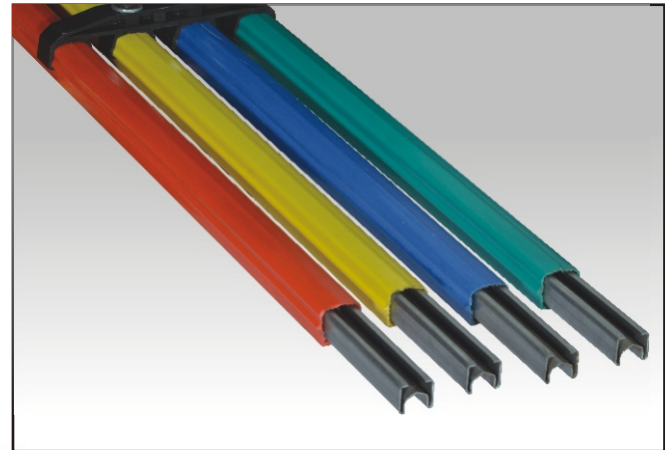
- Touch proof, no exposed live part.
- Quick & easy Installation.
- Insulating cover shaped to shed from water and dust.
- Single Pole individually Conductors.
- Suitable for Indoor / Outdoor Installation.



**Copper Bolt Type DSL Busbar**

### SAFE POWER "W" (Bolt Type)

- Bolt Joint for 1 Pole / 4 Pole.
- 100 AMP to 125 AMP Galvanised Iron.
- Up to 200 AMP Aluminium.
- 160, 250, 400 Amps. Copper.
- Bolt Type Conductor Bar Length 4.5 Mtr.
- System up to 150 Meter Without expansion joint.

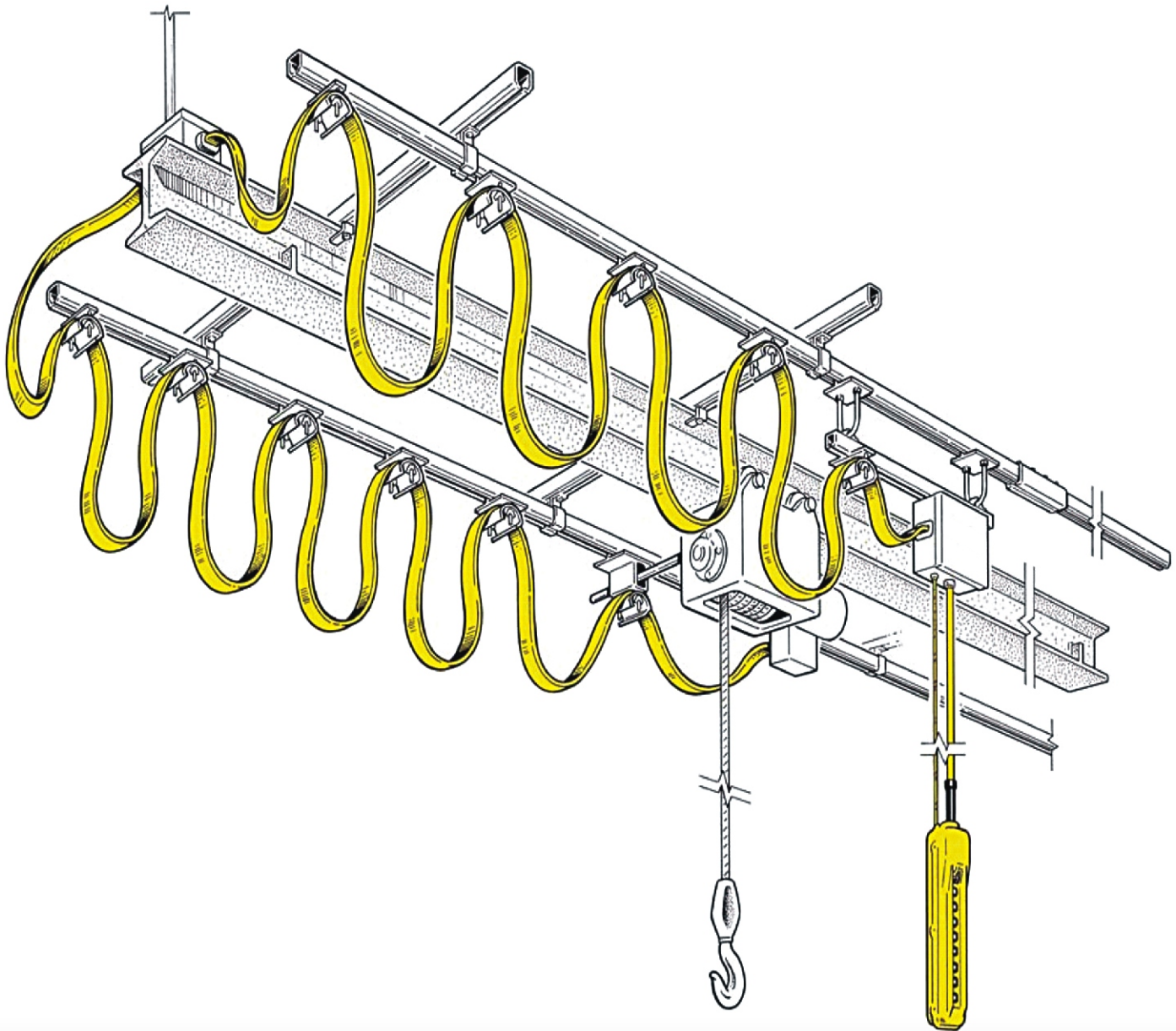


**GI Bolt Type DSL Busbar**

### FEATURES

- Touch proof, no exposed live part.
- Quick & easy Installation.
- Insulating cover shaped to shed from water and dust.
- Single Pole individually Conductors.
- Suitable for Indoor / Outdoor Installation.

## CABLE FESTOONING SYSTEM



## C RAIL FESTOONING SYSTEM

C Rail Festoon System suitable for round or flat cable. Ideal for use on cranes and hoists.





Aji GIDC, Behind Melt Tech, Road Q1, Shed No. K1-243/11,  
Rajkot – 360003 ( Gujarat) India  
PH : +91-281-2389285 / 2389385 Telefax : +91-281-2385381  
Email: info@eotcrane.in, ganeshcranes@gmail.com, gcranes1975@gmail.com  
www.eotcrane.in

## Contct us

Mr. Ghanshyam D Parmar (Proprietor & Technical Head)	+91 9825216374
Mr. Bharat D Parmar (Marketing Head)	+91 9879564445
Mr. Tushar Mehta (B.E. Mechanical)	+91 7506096850
Mr. Nirav Vyas (Marketing Manager)	+91 9909404447



